

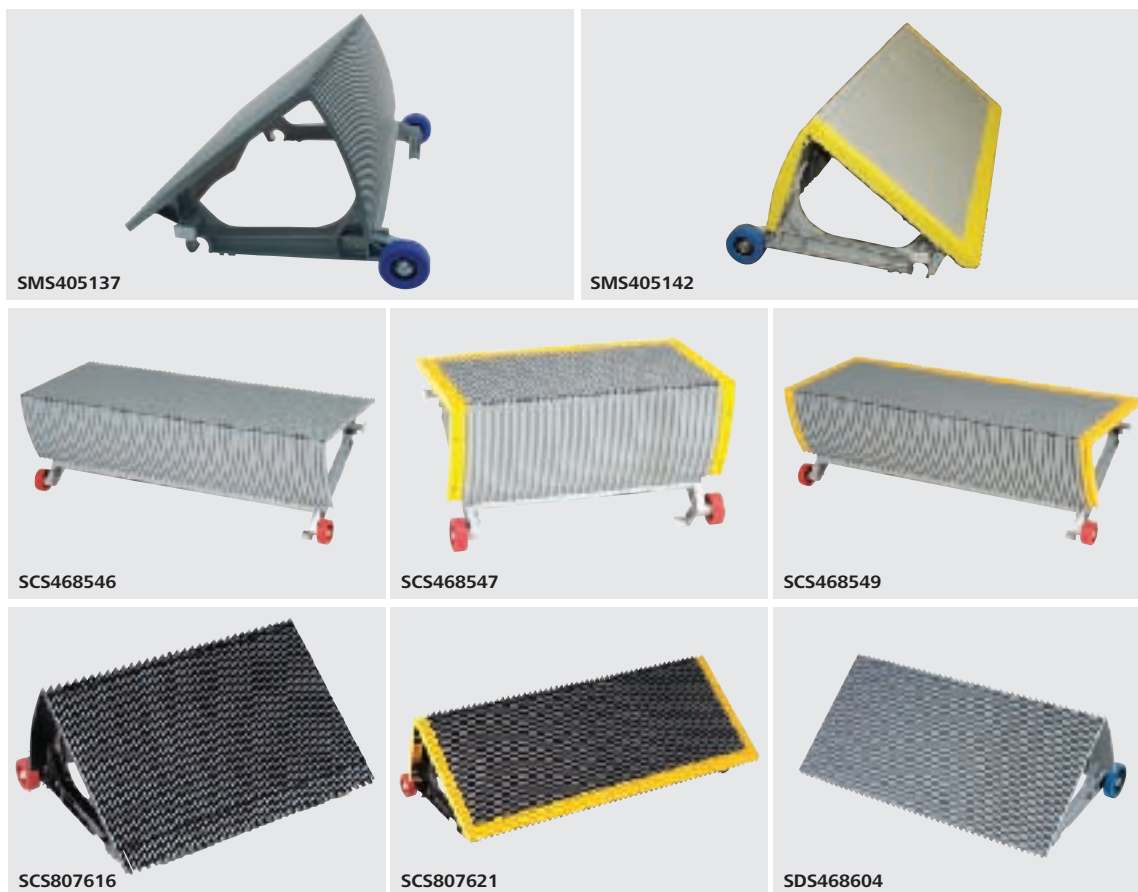
# Schindler Escalator Parts

**Escalator Parts**

- Step Assemblies ..... 64 – 65
- Step Parts..... 66 – 67
- Step Plastic Edges ..... 68
- Controls and Electrical..... 69 – 71
- Step Chain Assembly ..... 72
- Step Chain Assembly, Connecting Pipes..... 73
- Comb Plate Parts..... 74
- Comb Plate Parts and Step Axles ..... 75
- Balustrades and Deck Support Parts ..... 76
- Barriers, Barrier Assemblies and  
Caution Signs..... 77
- Brake Assemblies, Motors and  
Service Brakes ..... 78 – 80
- Drive Chains, Shafts and Units..... 81 – 85
- Handrails and Related Items ..... 86 – 92
- Lubrication Systems..... 93
- Miscellaneous Parts Hardware ..... 94 – 96
- Miscellaneous Electrical Parts ..... 97
- Covers, Decking, Trim, Plates,  
Panels, etc ..... 98 – 100



# Step Assemblies



Part Number	Description	Schindler Model
SMS405137	600S Step Complete, Silver w/o Demarcation	9300
SMS405142	1000SK Step Complete Silver w/o Demarcation	9300
SMS405142B	1000SK Step Assembly Complete Silver w/ Black Demarcation	
SCS468546	Step Assembly, 1000 Silver w/o Edge	SWE, SWU, SDG, SDS
SCS468547	Step 600K, Silver w/ Plastic Edge	SWE, SWU, SDG, SDS
SCS468549	1000SK Step Assembly, Silver w/ Edge, SWE	SWE, SWU, SDG, SDS
SCS807616	Step 600S Black	SWE, SWU, SDG, SDS
SCS807621	Step 1000K Black w/ Plastic Edge	SWE, SWU, SDG, SDS
SDS468604	Step Assembly 800, Silver	EWE, EWG, EWH
SCS468544	600S Step Silver w/o Plastic Edge	SWE, SWU, SDG, SDS
SCS468545	800S Step Silver w/o Plastic Edge	SWE, SWU, SDG, SDS
SCS468548	Step 800SK, Silver w/ Plastic Edge	SWE, SWU, SDG, SDS
SCS807617	Step 800S Black	SWE, SWU, SDG, SDS
SCS807618	1000S Step Complete Black	SWE, SWU, SDG, SDS
SCS807620	Step 800K, Black w/ Plastic Edge	SWE, SWU, SDG, SDS
SDS319932	Step Machined EWE-1000 Silver	9700
SVS268240B	Step Assembly, Silver w/ ADA	9700
SDS468605	Step Assembly 1000 Silver	EWE, EWG, EWH
SDS468609	Step Assembly 1000 Silver w/ Nilos Ring	EWE

# Step Assemblies



Part Number	Description	Schindler Model
SMS405138	800S Step Complete w/o Demarcation Silver	9300
SMS405139	1000S Step Complete Silver w/ Blue Rollers	9300
SMS405139AY	1000S Step Complete Silver w/ Yellow ADA	
SMS405139AY3	1000S Step Complete Silver w/ Yellow ADA	
SMS405140	600SK Step Complete w/ Demarcation silver	9300
SMS405141	800SK Step Complete, Silver w/ Blue Rollers	9300
SMS405143	600S Step Complete, Black w/o Demarcation	9300
SMS405144	800S Step Complete, Black w/o Demarcation	9300
SMS405145	1000S Step Complete, Black w/o Demarcation	9300
SMS405145G	1000S Step Complete, w/o Demarcation Gray w/ Blue Rollers	9300
SMS405146	600SK Step Complete Black w/ Demarcation	9300
SMS405147	800SK Step Complete w/ Demarcation, Black	9300
SMS405148	1000SK Step Complete Black w/ Demarcation	9300
SMS405148B	1000SK Step Assembly Complete Black w/ Black Demarcation	
SMS405148G	1000SK Step Complete, Gray w/ Blue Rollers	9300
SMS273428AY	600S Step Natural Finish w/o TEROP Yellow ADA	9300
SMS273428K	600SK Step 9300, Aluminum Natural Finish w/o TEROP	9300
SMS273428KAB	600K Step Natural Finish w/o TEROP Black ADA	9300
SMS273428KAY	600K Natural Finish Fin w/o TEROP Yellow ADA	9300
SMS273428	600S Step Aluminum Nat Fin w/o TEROP	9300
SMS273428AB	600S Step Natural Finish w/o TEROP Black ADA	9300
SMS273429	800S Step Aluminum Natural Finish w/o TEROP	9300
SMS273429AB	800S Step Natural Finish w/o TEROP Black ADA	9300

# Step Parts



Part Number	Description	Schindler Model
<b>Escalator Step Parts</b>		
SCS241535	Step Roller, for SWE Step	SWE, SWU, SDG, SDS
SCS319973	Washer	9300
SDS242073	Roller Dm100 for Step Blue	9700, EWE, EWG, EWH
SDS315221	Step Axle Bushing Slit	9300
SMS405029	Roller 76/6204 Brg Blue	9300
SWD465208	Roller Assembly SW	
SWS240186	Step Spacer	
SWS240636	Step Wheel Shaft	
SCS319637	Bushing, Step Black Solid	9300
SWS493472	Step Axle Bushing White/Mold 721-2073	Schindler/Haughton
<b>Moving Walk Step Parts</b>		
SFS390221	Pallet, RSE Walk 1000mm	RSE, RSH
SFS390222	Compact Pallet 800	RSE, RSH
SFS468462	Pallet Holder	9500
SFS468881	Plate Holder	RSE, 9500
SLS243001	Pallet, 1000mm (Z579001)	9500

# Step Parts



Part Number	Description	Schindler Model
SCS409594	Step Hook, Right Hand	9300
SCS409595	Step Hook, Left Hand	9300
SCS409794	Step Upthrust Kit, Right Hand	9300, SWU, EWE
SCS409795	Step Upthrust Kit, Left Hand	
SCS242006	Thread Rolling CSK Screw M8x22	9300
SFR319852	Step Centering Guide	9300, 9500
SCS409172	Step Guide Pad	9300
SWS498849	Step Guide Pad	
NAA299254	Split Spring Nut Clip B4	SWE

# Step Plastic Edges



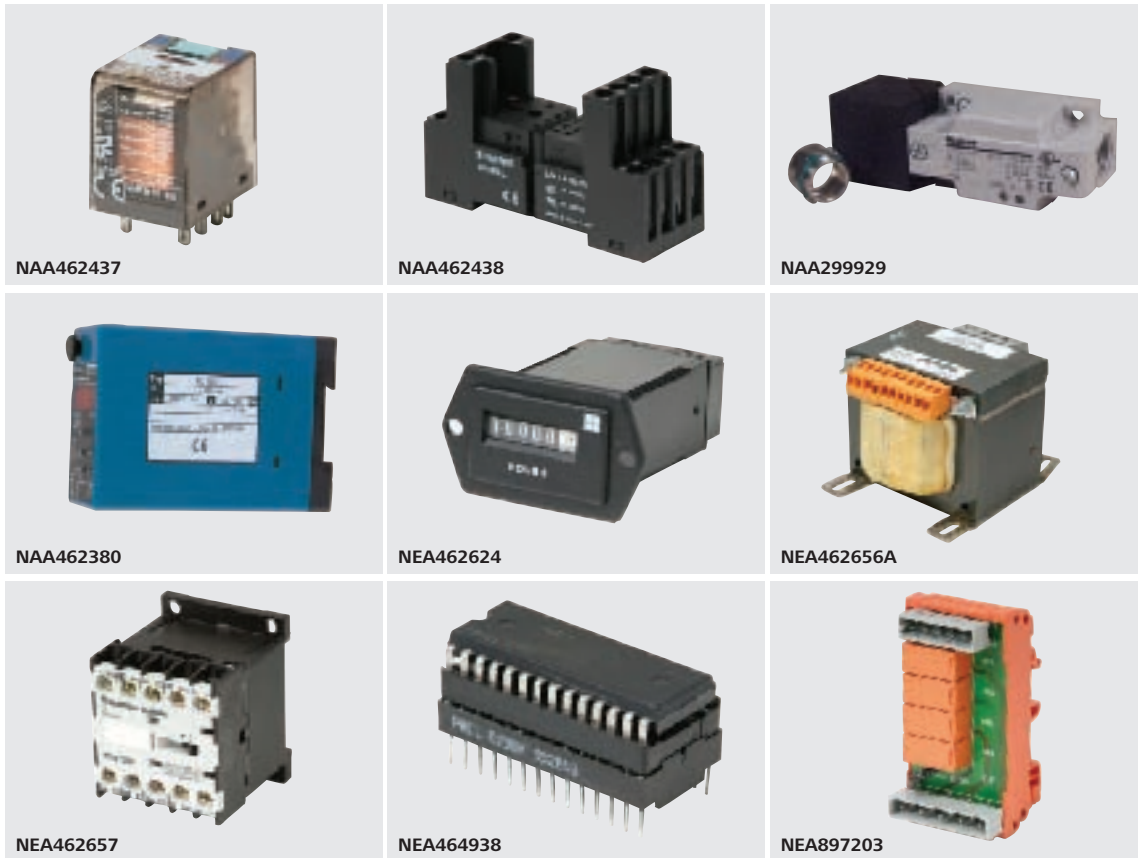
Part Number	Description	Schindler Model
SCS276009	Plastic Edge Side Left SWE, Black (RAL9017-F81)	9300
SCS276011	Plastic Edge Side Right SWE, Black (Ral9017-F81)	9300
SCS319900	Plastic Edge Top Center (RAL1023-F81)	9300
SCS319901	Plastic Edge Top Left Yellow (RAL1023)	9300
SCS319902	Plastic Edge Top Right Yellow (RAL1023)	9300
SCS319903	Plastic Edge Side Left SWE (RAL1023-F81)	9300
SCS319904	Plastic Edge Side Left EWE	EWE, EWG, EWH
SCS319905	Plastic Edge Side Right SWE (RAL1023-F81)	9300
SCS319906	Plastic Edge Side Right EWE	EWE, EWG, EWH
SCS395989	Plastic Edge Top Center, Black (RAL9017-F8)	9300
SCS395991	Plastic Edge Top Left, Black (RAL9017-F81)	9300
SCS395993	Plastic Edge Top Right, Black (RAL 9017-F81)	9300

# Controls and Electrical



Part Number	Description	Schindler Model
CLQ3603	Customer Reset Upgrade Kit	9300
CLQ9829	Interface Relay 24VDC (3RH1131-2JB40)	
NEA299282	Coding Key (231-129)	9500
NAA297247	Pressure Switch 2a 220v	9700
NAA298465	Lifting Solenoid 24V Gtca070	
NAA299216	Retaining Spring For Micro Relay Rp	9500
NAA299475	Miniature Circuit Breaker FAZ-C4	9300, SWE
NAA299476	Motor Protecting Switch 0,6a 600V UL	9300, SWE
NAA299477	Protective Motor Switch PKZM 0-10	9300, SWE
317136	Female Connector 6p-16a-250v-2, 5mm 2	9500
298889	Female Connector 8p-16a-250v-2, 5mm 2	9500
NAA298650	Auxiliary Contact Block HN01 (Norm. Close)	9300, SWE
NAA299497	Transformer 1ph 330va PR240-600V SK110/1	9500
299135	Female Connector 10p-16a-250v-2, 5mm 2	9500
NAA298929	Right Power Pcb Relay (SCHRACK-RT424024)	9500
NAA297251	Distributor Board 2-Outlets St-Zn	9700
NAA464778	Mushroom Push Button - Engage - Kpl.	
NAA462424	6 Pole Plug w/ Bridge for Mech Start/Stop	9500
NAA299241	Buzzer 24v F/Rmb-24	9700

# Controls and Electrical



Part Number	Description	Schindler Model
299929	Replacement Prox.Sensor-Balluff#Bes 517-132-M5-H	9700
NAA462380	Speed Monitor, Impulse Counter NU125D	SME, SRE
NAA462437	Micro Relay 4-pole 24v DC	9500
NAA462438	Pedestal F. Micro Relay Socket	9500
NEA462624	Hour Meter 24v DC (KEP AH57)	SWU, SDS
NEA462656A	Transformer	9500
NEA462657	Auxiliary Contactor K1-07D31 24VDC	9300, SWE
NEA464938	Real Time Clock Rtc Ds1216-C	9700
NEA897203	Relay Print Psr4.Q (224768)	SWU, SDS
NEA299019	Female Connector 3p-16a-250v-2, 5mm 2	9500
NEA432103	Female Connector 7p-16a-250v-2, 5mm 2	9500
NEA462653	Earth Spring	9500
NEA462597	Scan Sensors Amplifier	9500
NEA462600	Light Barrier Pnp Type: E3S-AT86	
NEA462621	Pin Header 10-Pole 721-170/003-000	9500
NEA888266	Limit Switch TS236-11ZÜ-M20	
SSG398013	NZM6B-63/ZM6A-25-200-NA Circuit Breaker	
SY590810	PEM 1.Q Board Escalator PCB (Note: PEM and PES Boards must be the same version)	
SY590811	PES 1.Q Board	9300
NEA462607	Plug 4 Pole M12 Vertical	
NEA462945	Plug 4 Pole M12 Angled	



# Controls and Electrical



Part Number	Description	Schindler Model
CLQ0484	Kit Proximity Sensor Bracket-SWT (Add on bracket for NAA299929)	SWU, SDS
CLQ8006	9300 Control Upgrade Kit (V3.3)	9300
SRE387603	Emergency Stop Button and Buzzer	
SIE387791	Stop Switch KABA SKA/I-1 SS (NO/NO)	9300, SWE
SKE469445	Digital Display	SWE, SWU, EWE, SDG
SSK897206	Digital Display D30 Complete 9000	SWE, SWU, EWE, SDG
CLQ9828	Suppression Diode (3RT1916-1DG00)	
SWL240189	Bolt T M8x25	
SRE38764324V	Step Gap Light Fixture 24v 18 in. Double	9300, SWE
NAA462404	Plastic Cover Green F Tubes F15T8/D	9300, SWE
SEE310595	Antistatic Brush	9300
337202	Limit Switch Right Hand (Auto Reset)	SWE, SWU, SDS, 9300
337203	Limit Switch Right Hand (Manual Reset)	SWE, SDS, SWU, SDG, RSE
337204	Limit Switch Left Hand (Manual Reset)	SWE, SDS, SWU, SDG, RSE
337205	Limit Switch Left Hand (Auto Reset)	9300, SWE, SWU, SWT, EWE, EWG
SCV409357	Connecting Block	
SRE438184	Distribution Box Main Switch	
HA-1067-P5	Fluorescent Tube F15T8/D	9700



NAA462404

# Step Chain Assembly



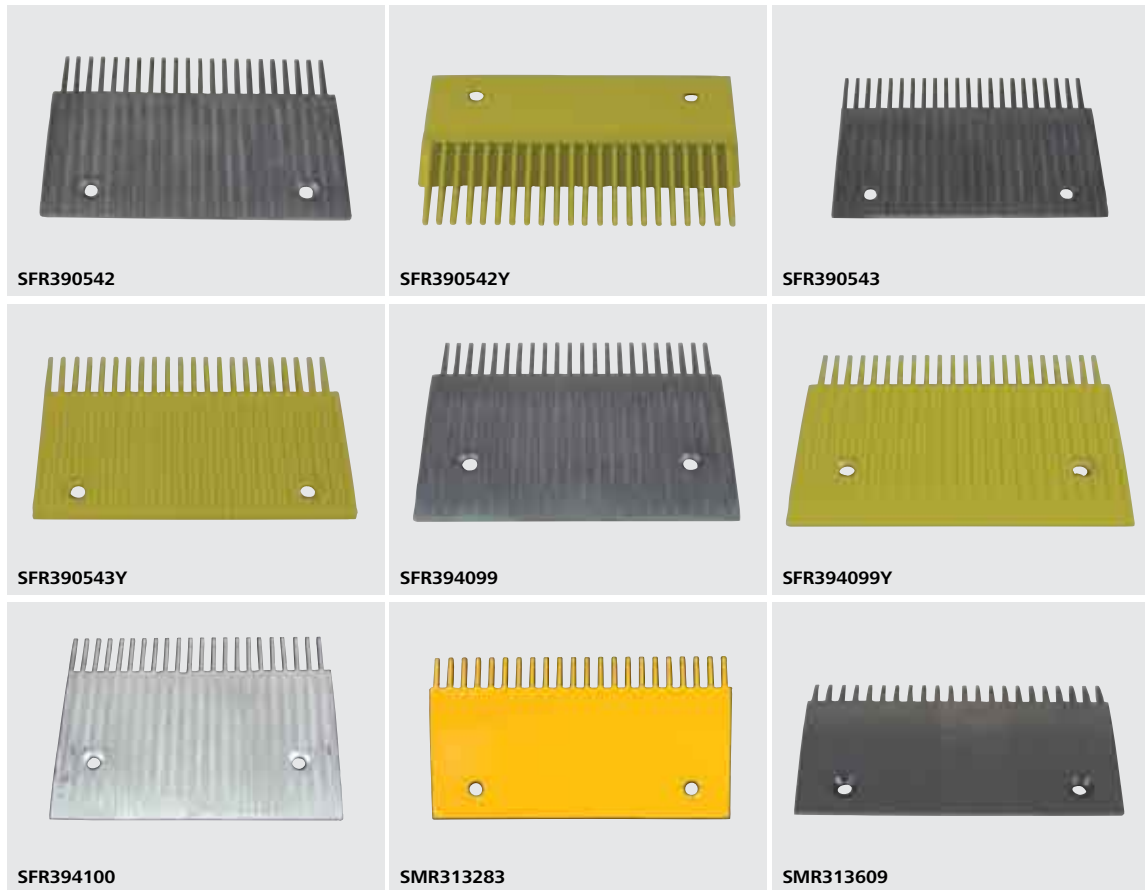
Part Number	Description	Schindler Model
NAA297912	V-Sealing Ring (V 25A-NBR)	9300
SMS244108	Clamping Spring Clip	9300
SMS244109	Axle Clamp	9300
SMS405119	Step Chain, 40mm height	9300
SMS405123	Chain Offset Link	9300
SCS241456	Offset Chain Link	
SCS241457	Step Chain, 35 links (12 step) (2pcs per box)	
SCS388994	Step Chain Link (SWE/SDS/9300)	9300
SMS244074	Step Chain (Order in multiples of 9.6m)	9300
SMS884884	Step Chain (R02 Design)	9300
SMS884884X	Step Chain (R02 Design)	9300
SDS393001	Step Chain	
SMS244071	Step Chain, 50mm height (Order in multiples of 9.6m)	9300
SMS244077	Chain Link	9300
SWS247877	Pin, L = 84.7 for Step Chain	
SWS247878	Pin, L = 59 for Step Chain	
SML244157	Tangential Guide, Left Hand (SII266894)	9300
STS437475	Driving Shaft-1000mm Axle w/ Lg Bore ZN7	9300

# Step Chain Assembly, Connecting Pipes



Part Number	Description	Schindler Model
SMS405191	Connection Pipe 600mm	9300
SUS496193	Connecting Pipe 1000mm OS Bore	9300
SMS405195	Connection Pipe 1000mm	9300
SMS405196	Connection Pipe 1000mm Stainless Steel	9300
SUS497121	Connecting Pipe 800mm	9300, 9700
SWS241273	Axle, Stub	9300
SWS241274	Connecting Pipe 600 General	9300, SWE
SR360828A0A	Step Axle, Solid ZN7 (586mm)	SWE
SR360828C0A	Step Axle, Solid ZN7 (985mm)	SWE
SMS405199	Step Axle 1000mm	9300

# Comb Plate Parts



Part Number	Description	Schindler Model
SR360835	Tooth Segment	
SFR390542Y	Comb Finger Yellow End	RSE, RSH
SFR390543	Comb	RSE, RSH
SFR390543Y	Comb Finger Yellow Center	RSE, RSH
SFR394099	Comb with Grooves, Center Section	9500
SFR394099Y	Comb with Grooves, Center Section, Yellow	9500
SFR394100	Comb Finger Yellow End with grooves, Center Section	9500
SFR394100Y	Comb Finger Yellow End Rise	9500
SMR313609	Comb Finger Center Aluminum	9300
SMR313283	Comb Center Section, Yellow	9300
SMR318762	Comb Finger, Center Black Powder Coated	
SMR318763	Comb Insert Right Hand Black Powder Coated	
SMR318764	Comb Insert Left Hand Black Powder Coated	
SMR898515	Comb Insert End - Aluminum, Right Hand	9300
SMR898516	Comb Insert End - Aluminum, Left Hand	9300
SMR898743	Comb Finger End Right Hand, Yellow	9300
SMR898744	Comb Finger End Left Hand, Yellow	9300

# Comb Plate Parts and Step Axles



Part Number	Description	Schindler Model
<b>Comb Plate Parts</b>		
DIN016	Serrated Lock Washer 6	9300
DIN798403	Zyl. Screw M6x12 Din7984 8,8	9300
NEA462612	Ballast PI7w Flat	9300, SWE
SMR405031	Contact Actuation Left Hand	9500
SMR405032	Contact Actuation Right Hand	9500
SMR898515	Comb Insert End Aluminum RH	9300
SMR898516	Comb Insert End Aluminum LH	9300
SMR898743	Comb Finger End Yellow RH	9300
SMR898744	Comb Finger End Yellow LH	9300
<b>Step Axles</b>		
SMS244107	Step Axle, Stainless Steel 1000mm	9300
SWS336223	Step Axle, 1000mm	SWE

# Balustrades and Deck Support Parts



Part Number	Description	Schindler Model
CLQ3713	Spare Hardware Kit Packaging	9300
NAA464759	Sheet Steel Nut M4	9300
SCV241347	Cover Strip, Under Handrail Light	SWE
SCV319268	Profile Holder Cpl	SWE
SEV498338	Clamping Plate Cpl.	9300
SCV241331	Plastic Sealing Strip (20ft / 6m)	SWE
SMV405108	Clamping Strip - (Order in Multiples of 6.2m)	9300
SMV405604	Balustrade Profile Transition Top 35	
SMV405607	Balustrade Profile Transition Bottom 35	
SCV241096	Rubber Profile	SWE

# Barriers, Barrier Assemblies, Caution Signs



Part Number	Description	Schindler Model
CLQ9306	Single Barrier	9300
CLQ9307	Double Barrier	9300
CLQ3765	Hold Handrail Decal Adhesive, Yellow, 4" x 7 3/4" (Can be applied to barriers if needed)	
2838C22H09	Hold Handrail Decal, Yellow, 4 1/2" x 8", .002 thick (Can be applied to barriers if needed)	
A558C	Hold Handrail Sign (2000 Code / US and Canada)	9300
SWV467381	Rubber Channel	SWE, RSE
CLQ2020	Oval Head Machine Screw Chrome	9300

# Brake Assemblies, Motors, Service Brakes



Part Number	Description	Schindler Model
340310	Proximity Switch M18	9300, SWE, SWU, SWT, EWE, EWG
NAA299303	Lifting Solenoid 110/120 V Passive Lock	SWE, SWT, SWU, EWE, EWG
NAA298465	Lifting Solenoid 24V Passive Lock	SWE, SWT, SWU, EWE, EWG
NAA297459	Lifting Solenoid for Passive Lock 220V	SWE, SWU, SDS
SSB897396	Lifting Solenoid 97VDC	
NAA544206	Bearing Bushing (MB1020DU)	SWE, SWT, SWU, EWE, EWG
NEA462570	Service Brake Proximity Switch E2EL-X4MF1-M1 (Speed Sensor)	9300, SWE
SCT392556	Service Brake Band Complete	9300
SCT394639	Service Brake Small Pin	9300
SDT437144E	Brake Motor 220v, 60h Big	SWE, SWT, SWU, EWE, EWG
SDT438512	Brake Motor DFMU 80l/12, 265/460 V	
SDT438508P	SWE Brake Motor w/ Pinion, 208/360 V	SWE
SSA897200	Service Brake Solenoid, 110 VAC	9300, SWE
SSH897444	Service Brake Proximity Switch M5	9300

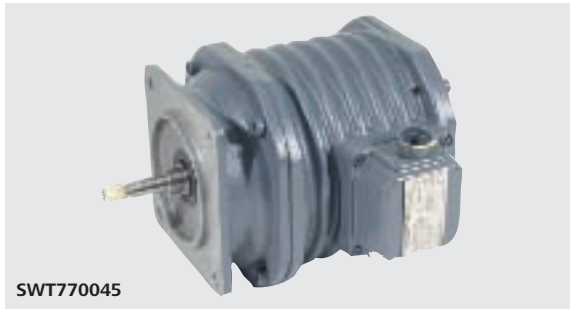


# Brake Assemblies, Motors, Service Brakes



Part Number	Description	Schindler Model
SWT242009	Brake Motor Pinion Assembly	SWE, SWT, SWU, EWE, EWG
SWT463934	Service Brake Distance Sleeve or Spacer Bushing	9300, SWE, SWT, SWU, EWE, EWG
SWT463954	Brake Band Complete	SWE, SWT, SWU, EWE, EWG
SET465036	Brake Shoe Complete	SWE, SWU, SDS
SET465040	Spring Centering Washer	SWE, SWU, SDS
SET465058	Emergency Brake	SWE, SWU, SDS
SWT354082	Brake Band Assembly	
SMT312119	Brake Band Complete	
SCT392324	Brake Disc	
SWT336207	Brake Gear Sector	
SDT438513MOD	Brake Motor and Pinion 80/12 277/480 V	
SWT770864	Emergency Brake Pawl	

# Brake Assemblies, Motors, Service Brakes



Part Number	Description	Schindler Model
SCT394630	Guide	
SSI897410	Emergency Stop Box - Inclined Balustrade	
SWT770045	Brake Motor w/ Pinion	
SWT770042	Motor 7 1/2 Hr. 1750 Rpm	
NAA297455	Clevis w/ ES-PIN, G8x32 Zn7	
NAA297456	Clevis w/ ES-PIN, G10x40 Zn7	9700

# Schindler Drive Chains, Shafts and Units



Part Number	Description	Schindler Model
741310	9300-20 Chain Drive (87 Link) 108/120fpm	9300, SWE, SWT, SWU, SDG, SDS, EWE, EWG
741320	Chain 16B-2 x 93 Links	SDG
741329	Chain 16B-2 x 15 Links	9300
741330	Chain 16B-2 x 103 Links	9300, SWE, SWU
741334	Chain 20B-2 x 87 Links (0.45mps/90fpm)	SWE, SWT, SWU, SDG, SDS, EWE, EWG
741335	Chain 20B-2 x 89 Links (0.5mps/100fpm)	SWE, SWT, SWU, SDG, SDS, EWE, EWG
741490	Master Link G-16B-2 DIN 8187	9300
741492	Chain Master Link 20B-2	SWE, SWT, SWU, SDG, SDS, EWE, EWG
NAA248793	Chain Link- Master Link (20B-2 Chain)	9300
NAA296514	9300-10 Drive Chain 20B-2 x 91 Links	9300
NAA297454	Drive Chain 93 Links (100fpm/150fpm)	9300, SWE, SWT, SWU, SDG, SDS, EWE, EWG
NAA298449	Connecting Link Chain 24A-2 DIN 8188-G	9300
NAN464946	Roller Chain DIN 8188-24A-2x87	
NAN464956	Duplex Roller Chain DIN 8188-24A-2x83	
NAN464957	9300-20 Chain 24A-2 x 85 Links DIN 8188	9300
SFS241458	Pallet Chain (Order in Multiples of 2)	RSE, RSH
SFS394176	Pallet Chain Link	RSE, RSH
SWT770851	Drive Chain Switch Assembly	
SWT770266	Drive Chain Follower	

# Schindler Drive Chains, Shafts and Units



Part Number	Description	Schindler Model
SCT315158	Broken Chain Contact Right (SWT241064)	SWT
SCT315159	Broken Chain Contact Left	SWT
SMT898877	Broken Chain Contact Complete	
SMT898878	Broken Chain Contact Complete	
SMH405467	Chain Cover	
SMS884886	Chain Link	
SMT244922	Flywheel H-28	
NKA462694	Roller Chain	
SEK498064	1000 Mm Headshaft Axle	
SWK770020	Headshaft Assembly 600mm	
SWK770021	Headshaft Assembly 800	
SWK770022	Headshaft Assembly 1000 New	
SCT394001	9300-10 Sprocket (17 Teeth) 90fpm	9300, SWE, SWT, SWU, SDG, SDS, EWE, EWG
SMK405149	Step Chain Sprocket 9000	9300
SMK405151	Handrail Drive Chain Sprocket	9300

7

# Schindler Drive Chains, Shafts and Units



Part Number	Description	Schindler Model
SMK405162	Brake Disk Assembly Complete 9300	9300
SMK405169	Main Drive Chain Sprocket	9300
SMK405173	Main Drive and 2nd Drive Chain Sprocket	9300
SMK405793	9300-20 Main Drive and 2nd Drive Chain Sprocket	9300
SMK405926	Bracket for Split Sprocket	9300, SWE, SWU, SWT
SMT313977	9300-20 Sprocket 1.5" Pitch (16 teeth) 100fpm	9300
STK437464	Handrail Drive Chain Split Sprocket	SWT, 9300
SWT247851	9300-10 Sprocket (19 Teeth) 100fpm	9300, SWE, SWT, SWU, SDG, SDS, EWE, EWG
SWT247853	Pinion (24 Teeth) 125fpm	9300, SWE, SWT, SWU, SDG, SDS, EWE, EWG
SWT770404	Drive Sprocket (1 Per)	
SWK770789	Drive Sprocket 100-2 65t	
SWK770019	Split Sprocket 80-2 30t	
SFH466057	Sprocket (Each)	
SWK770511	Step Sprocket (Order Matched Pair)	

# Schindler Drive Chains, Shafts and Units



Part Number	Description	Schindler Model
CLQ3834	Sprocket Pin Replacement Kit 9300/10	9300
CLQ3835	Sprocket Pin Replacement Kit 9300/20	9300
SWK770515	Hollow Shaft 1000 mm	
SWK770514	Hollow Shaft 800 mm	
NAA298587	Rubber Pads for NAA298872, B110 Coupling (6 Pack)	9300, SWE, SWT, SWU, SDG, SDS, EWE, EWG
NAA298588	Rubber Bushing Set, B95 Coupling (6 Pack)	9300, SWE, SWT, SWU, SDG, SDS, EWE, EWG
NAA298872	N-Eupex Coupling, 4.3" Dia.	9300
NAA299197	Hex Socket Hd. Cap Scr. M6 x 25 DIN912-10.9	9500
NAA462525	Coupling Eupex B110 Male (Motor)	9300
SMT244501	9300-20 Reducer, Right Hand (Bevel Helical Gear)	9300
SMT244502	Straight Bevel Gear - Left (Helical)	9300
SMT244938	Reducer, Escalator (Gear 160) Single Drive	9300, SWE, SWT, SWU, SDG, SDS, EWE, EWG
SMT244939	Reducer (Worm Gear 160) Double Drive	9300, SWE, SWT, SWU, SDG, SDS, EWE, EWG
SDT315529	Sliding Rail	SWE, SWU, SDS, SDG, RSE
SMT313427	Thread Plate	9300
SWH247801	Threaded Plate	SWE, SDS, SWU, SDG, RSE
SWT247862	Excenter Drive Chain Tension Adjuster	SWE, SWT, SWU, SDG, SDS, EWE, EWG
SWT770854	Lever Arm	

# Schindler Drive Units



SMT244939



SSB897348

Part Number	Description	Schindler Model
SCT147771	Motor 8.0kw 480v-60h-3ph	SWE, SWT, SWU, SDG, SDS, EWE, EWG
SCT147828	Motor 5.5kw 460v-60h-3ph	SWE, SWT, SWU, SDG, SDS, EWE, EWG
SCT147830	Motor 8.0kw 208v-60h-3ph	SWE, SWT, SWU, SDG, SDS, EWE, EWG
SCT147831	Motor 8kw 460v-60h-3ph	SWE, SWT, SWU, SDG, SDS, EWE, EWG
SCT147832	Motor 11kw 208v-60h-3ph	SWE, SWT, SWU, SDG, SDS, EWE, EWG
SCT147833	Motor 11kw 460v-60h-3ph	SWE, SWT, SWU, SDG, SDS, EWE, EWG
SCT147834	Motor 11kw 480v-60h-3ph	SWE, SWT, SWU, SDG, SDS, EWE, EWG
SCT147837	Motor 15kw 480-60h-3ph Fahrtreppenmotor	SWE, SWT, SWU, SDG, SDS, EWE, EWG
SSB897305	Motor IP55, 5,5kw 208v	9300
SSB897306	Motor IP55, 7.5kw 208v	9300
SSB897307	Motor IP55, 11kw 208v	9300
SSB897308	Motor IP55, 15kw 208v	9300
SSB897310	Motor IP55, 5,5kw 220v	9300
SSB897311	Motor IP55, 7.5kw 220v	9300
SSB897312	Motor IP55, 11kw 220v	9300
SSB897337	Motor IP55, 11kw 440v	9300
SSB897341	Motor IP55, 7.5kw 460v	9300
SSB897345	Motor IP55, 5,5kw 480v 50/60hz w/ CSA	9300
SSB897347	Motor IP55, 11kw 480v	9300
SSB897348	Motor IP55, 15kw 480v	9300
SSB897350	Motor IP55, 5,5kw 600v	9300
SSB897351	Motor IP55, 7,5kw 600v	9300
SSB897352	Motor IP55, 11kw 600v	9300

# Schindler Handrail and Related Items



Part Number	Description	Schindler Model
SVH399026	Poly V-Belt Handrail Drive, Black	9700
NAA336226	Flat Belt Handrail Drive SWE	SWE
SCH896208	Reversing Chain	9300, SDS
SGH439050	Reversing Chain Sdg L=1725	SDG
SCH409585	Reversing Chain SDS	9300
SMH405728	9300 Reversing Chain, 12-Rollers Fn Balustrade	9300
SMH405816	9300 Reversing Chain, 15- Rollers Ft Balustrade	9300
NKA424851	Conical Locking Device 40x65 Tlk 134-Sa	9300
SWH354104	Pressure Belt Roller	
NAA297278	Roller Lever TYP TK 015-11Y	
SMH405680	Support Roller Complete	
SEH336228	Roller, for Handrail Support	
SCH394007	Pulley, Poly-V-Belt	9300
SCH394014	K Pulley w/ Shaft, Poly-V-Belt	SWE, SWU
SDH392124	Fixing Spring (Order in Multiples of 5)	SWE, SWU



# Schindler Handrail and Related Items



Part Number	Description	Schindler Model
SCH409193	Handrail Drive Shaft Complete 1000	SDG, SDS
SCH409194	Handrail Drive Shaft Complete 800	SDG, SDS
SCH409195	Handrail Drive Shaft Complete 600	SDG, SDS
SCH437468	Handrail Drive Shaft Complete 1000	SWE, SWU
SCH437469-C	Handrail Drive Shaft and Sprocket 800	SWE, SWU
SCH437470	Handrail Drive Shaft Complete 600	SWE, SWU
SDH315482	Intermediate Shaft 1000 Handrail Drive	EWE, EWG, EWH
SCH409369	Tension Rollers and Mtg Left Hand	SDS
SGH409520	Newel Roller Complete	SWE, SWU
SMH405621	9300 Handrail Drive Shaft w/ Sprocket 1000mm	9300
SMH405623	9300 Handrail Drive Shaft w/ Sprocket 600 mm	9300
SMH405622	9300 Handrail Drive Shaft w/ Sprocket 800 mm	9300
SWH770192	Drive Sprocket and Shaft 600	
SCH310676	Friction Drive Wheel	
SCH242146	Lever Complete	SDG
SGH409520	Lever Complete	SDG
750820	Flange Bearing UCFL210 Pillow Block	9300

# Schindler Handrail and Related Items



Part Number	Description	Schindler Model
SMH405523	Deflection Pulley Complete	9300
SWT247856	Actuator, Stopped Handrail Monitor	SWE, SWU
SMV405870	Adjusting Stirrup Piece	9300
SMH405681	Angle; Hr Take-Up Bracket 9300	9300
SMH318221	Antistatic Brush	9500
SMH898843	Bearing Pin Complete	9300
SMH898844	Bearing Pin Complete	9300
SMH898845	Bearing Pin Complete	9300
SMH898846	Bearing Pin Complete	9300
SMH898847	Bearing Pin Complete	9300
SWV770030	Black Handrail Guard	
SCH409214	Chain Link	SDS
SMV312736	Clamping Strip Left Hand	9300
SMV312737	Clamping Strip Right Hand	9300
SMV405669	Compression Spring	9300
SCV319891	Cover Profile Long	SDS
SCV469716	Cover Profile Long	SDS, SWU

# Schindler Handrail and Related Items



Part Number	Description	Schindler Model
SCV319892	Cover Profile Short Left Hand	SDS
SCV319893	Cover Profile Short Right Hand	SDS
SCV319424	Face Plate "F" Stainless Steel Balustrade Lighting Inner LE	SWE, SWU
SCV319416	Front Plate "F" Aluminum Balustrade Inner Left	SWE, SWU
SCH409612	Guide Piece	SWE, SWU
SCH394092	Guide	SWE, SWU
SDH315301	Guide Piece	SWE, SWU
SMH313998	Guide Piece	9500
SMH898596	Guide	9300
SDH393696	Guide Piece Handrail Transition	9300
SCH469318	Handrail	SWE, SWU
SMH898585	Handrail (Custom Order)	9500
SWH770195	Handrail Drive Sprocket	
SCV409940	Handrail Entry	SDS
SMV318535	Handrail Entry Boot Right Hand "E" Balustrade w/ Brush	9300
SMV318536	Handrail Entry Boot Left Hand "E" Balustrade w/ Brush	9300
SMV318537	Handrail Entry Boot Right Hand "F" Aluminum Balustrade w/ Brush	9300
SMV318538	Handrail Entry Boot Left Hand "F" Aluminum Balustrade w/ Brush	9300

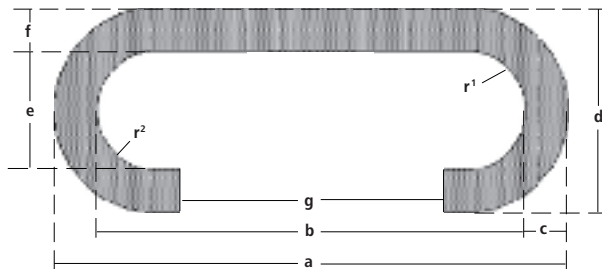
# Schindler Handrail and Related Items



Part Number	Description	Schindler Model
SMV318539	Handrail Entry Boot Right Hand "F" Stainless Steel Balustrade w/ Brush	9300
SMV318540	Handrail Entry Boot Left Hand "F" Stainless Steel Balustrade w/ Brush	9300
SMV405890	Handrail Entry Boot Right Hand "E" Balustrade w/o Brush	9300
SMV405891	Handrail Entry Boot Left Hand "E" Balustrade w/o Brush	9300
SMV405893	Handrail Entry Boot Right Hand "F" Balustrade w/o Brush	9300
SMV405894	Handrail Entry Boot Left Hand "F" Balustrade w/o Brush	9300
SEV247385	Handrail Entry Contact Left	SCV
SMV313971	Handrail Guide Piece Complete	
SFV809541E	Handrail Reversing Band Cpl	
SMV405794	Outer Cap - Right	9300
SMV405795	Outer Cap - Left	9300
SMV405796	Inner Cap - Right	9300
SMV405796E	Inner Cap - Right w/ 1 Key Switch Hole	9300
SMV405797	Inner Cap - Left	9300
SMV405865	Handrail Entry Contact Left	9300

7

## Replacement for Schindler handrails



- a = 3 1/4" (82mm)
- b = 2 3/16" (60mm, ±2)
- c = 3/8" (10mm)
- d = 1 3/16" (34mm, ±1)
- e = 1 5/32" (12mm)
- f = 7/16" (12mm, ±1)
- g = 1 3/32" (33mm, ±2)
- r<sup>1</sup> = 1/4" (6mm)
- r<sup>2</sup> = 1/4" (6mm)

Part Number	Description
SHE-900	Schindler, Steel Cord, Low Profile
SHE-991	Schindler, Steel Cord



# Schindler Handrail and Related Items



Part Number	Description	Schindler Model
SVV265451	Handrail Entry Contact Left Hand	9700
SEV247386	Handrail Entry Contact Right	SCV
SMV405866	Handrail Entry Contact Right	9300
SVV265460	Handrail Entry Contact Right Hand	9700
SMH405109	Handrail Guide (Order in Multiples of 6.4m)	9500
SWH770172	Handrail Guide Lower	
SCV388802	Handrail Guide Track (Per Ft)(Std 21')	
SWH770173	Handrail Guide Upper	
SCH807184	Handrail Guide Bend Bottom 30	SWU
SCH807183	Handrail Guide Bend Bottom 30	SWU
SCH807181	Handrail Guide Bend Top 30	SWU
SCH807182	Handrail Guide Bend Top 30	SWU
SMH244009	Lifting Rod	9300
SMH244011	Pulley Complete	9300
TD282	Handrail Removal Tool	

# Schindler Handrail and Related Items



Part Number	Description	Schindler Model
SMH405291	Newel Rollers	9300
SEH498347-C	Newell End Roller Chain	SWE, SWU
SMH244210	Parts for Handrail Tension K	
SMH244211	Parts for Handrail Tension M/L/V	
SMV405869	Release Lever	9300
SMH405045	Roller Complete for Handrail Guide	9300
SWH770886	Handrail Roller Cluster Assembly	
SDH241990	Roller Holder	SHE
SDH241991	Roller Holder	SHE
SDH891920	Roller Holder Left Hand	SWE, SWU
SDH891919	Roller Holder Right Hand	SWE, SWU
SCH409199	Roller with Shaft Esc.	SDG, SDS
SDH315852	Slotted Spring Type Straight Pin	EWE, EWG
SCH893209	Spacer Sleeve	9500
SR360805	Sprocket Split D-30T	SWE, SWU, SWT, EWE, EWG
SCV806744	Support Bolt	9300

# Schindler Lubrication Systems



Part Number	Description	Schindler Model
CLQ1872G01	Oiler Kit Assembly, Main Drive Chain	SWU, SDS
CLQ3706	Lubrication Brush Complete	9300, 9700
NAA297141	Automatic Lubrication Oil Applicator Brush Dia1 0x35	SWE
NKA462967	Brush for SKF Lubricator Canister	9300, 9700
NKA462970	Canister for SKF Lubricator	9300, 9700
SCS894174	Oil Supply Complete	SWE, SWU, SWT, SDS, EWE, RSE, RSH
SMS312445	Lubricating Unit Handrail Drive Chain 9300-10	9300, 9700
SMS312447	Lubricating Unit Step Chain Left Hand	9300, 9700
SMS312448	Lubricating Unit Step Chain Right Hand	9300, 9700
SMS312453	Oil Container	9300, 9700
SMS312454	Oil Container	9300, 9700
SMS312460	Hose Fitting	9300, 9700
SMS312462	Lubrication Brush	9300, 9700
NAA462364	Dosing Elem. 4/M10x1x60,5 10mm 3-ST ZN	9700
NAA297239	Dosing Elem. 4/M10X1X60,5 10mm 3-ST ZN	

# Miscellaneous Parts Hardware



Part Number	Description	Schindler Model
CLQ3290	M4 X 12mm Tamper Proof Screw (Order in Multiples of 100)	
CLQ3508	9300 Turnaround Spring Rods - Retrofit	9300
CLQ3599	Adhesive Tape .045" x 1.5" x 36yd Both Sides	
CLQ3599R	Adhesive Tape .045" x 1.5" x 36yd (1Roll)	
CLQ0424H	Key Label USA & Canada ADA Top & Bottom, 9300	9300
SMR898626	Adjusting Screw, M10x35 Din933-8.8 Zn7	
NAA248860	Nilos Ring 6204 Zav	9700
NAA291351	Grooved Ball Bearing 6208-2rs	9700
NAA462519	Key A2x2x10 DIN6885	
NEA462605	Cable 1 Pol. + Copper Braiding	
NEA462670	Cable 16/7, Type Sow, 600v,90 Deg. C	
NEA462676	Cable Cl2r 7xawg16 Numbered	
NEA888055	Cable Gland M20x1.5 Metric	
NEA888056	Cable Gland M25x1.5	
NAA248794	Chandelier Chain 22	9300
SMS313698	Console	
SMR405497	Guide Block, Escalator	
NAA297224	Hose 6x1,2 Pa Transparency	9700
SWV770131	Open Eye Bolt	



# Miscellaneous Parts Hardware



Part Number	Description	Schindler Model
NAA248864	O-Ring 18,64x3,53	
DIN 47104	Retaining Ring 10x1,0 DIN471	
NAN605061	Seal Shaft 60x75x10 Bsl Fuer	
SWV770609	Wire Retainer	
SWT770050	Bushing	
SWT770054	Bushing 16x18x25 Du	
SWV465934	Distance Piece	9300
SWL240262	Drip Pan / Chain Guard SW	
SWL807126	Drip Tray	
NAA297234	Gasket Din7603-A10x13,5 Cu	9700
SMR244184	Pin	
SWD770090	Plug Screw	
NAA248548	3 L Packing Unit	
SSG897609	AS32 IP54 9000	

# Miscellaneous Parts Hardware



Part Number	Description	Schindler Model
NEA462565	Infrared Light Barrier Phs Type:E3s-At66	
SWF770497	Lamp Mounting Angle	
SMV405103	Lighting Profile 6.05m	
SMH405468	Oil Drain Channel Soldered	
NAA464781	Protection Diode Mod (Schrack-Rpmt00a0)	
NAA299929	Prox. Sensor-Balluff #Bes 517-132-M5-H Electrical	9700
NMA462583	Radial Piston Pump 3	9700
SMV405634	Reversing Section Complete	
SMV313602	Reversing Stand Left Top	
NAA464487	Round Section Rubber 8	
SWT770052	Rubber Spring	
NAA297216	Sliding A Assembly Paste HATEC 0,8kg	
SMHWK1	Surf Mount, Hardware Kit 1, Surf. Mount Fix	
SLL266894	Tangential Guide, Right Hand or Left Hand	
SWT770438	Tap Plate	
SMH405487	Belt Tension Assembly	
SMH312734	Tension Device Complete	
SWH770894	Tension Rod	
SWS240150	Upthrust Foot	
SWT242130	Inner Ring	

# Miscellaneous Electrical Parts



Part Number	Description	Schindler Model
297117	KMSI Key	
315320	Push Button (Reset)	
315358	Dimple Key for KABA (KAB1)	
315380	Keyed Switch Up-Off-Dn MSI key (outdoor)	
CLQ0424H	Keyswitch Halo Labeled - UP/RUN/DOWN	9300
CLQ9703	KM Key Switch	SWU, SDS
CLQ9768	Key for CLQ9703 Kent (MSI)	SWU, SDS
NAA298643	Speed Monitor 60-600 P/M 220V	
NEA462544	Phase Relay PF3 200-600C	9300, SWE
NEA462553	Key Switch Assembly RS3-A4 Engraved B6281-1 Key	9300, SWE
SSI398646	Key for B6281-1(Euro)	
SSI398713	Keyswitch Halo Labeled - Acknowledge/Rest/Clear	9300
SSI897411	Keyed Switch Momentary (KABA202) Key Change	

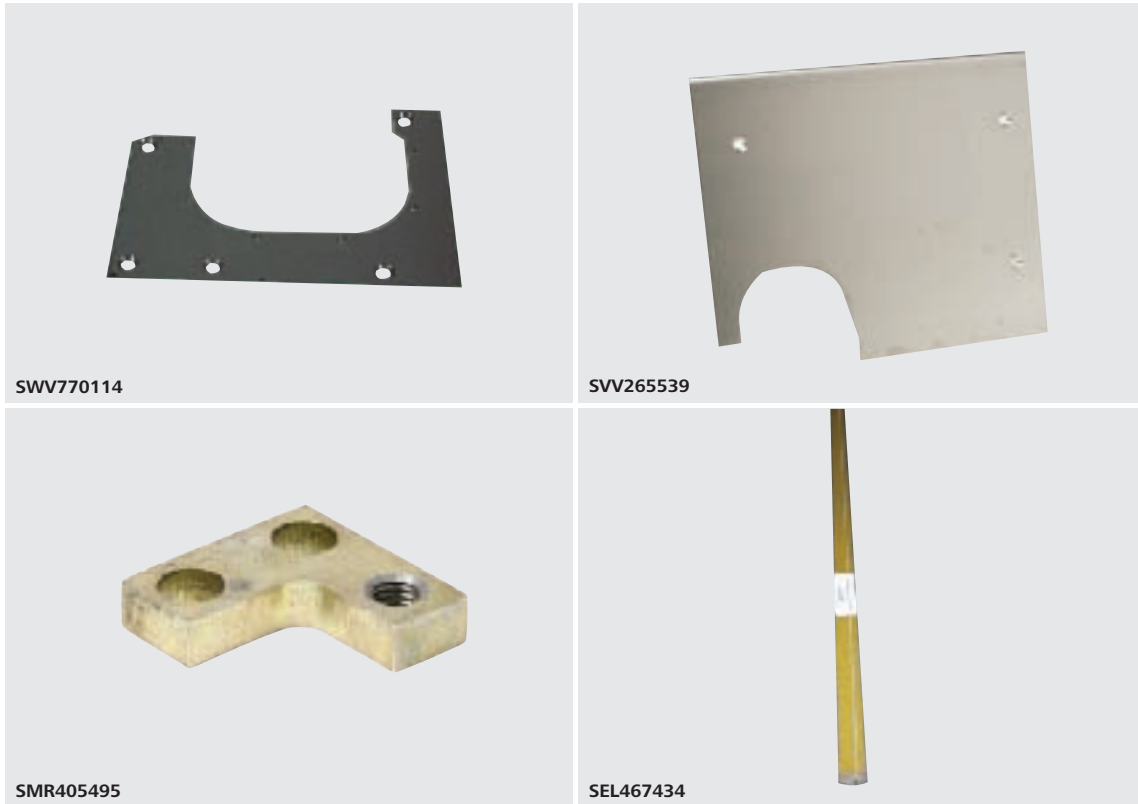
# Covers, Decking, Trim, Plates, Panels, etc.



Part Number	Description	Schindler Model
SFV809639	Cover	9700
SMV50620563	Cover	
SWL807127	Cover Sheet	
SMD244358	Covering Complete	
SMD244359	Covering Complete	
SMV405409	Decking Transition Bottom Bend 30°	
CLQ9012	End Cap Black Kit	
SWD770082	Floor Plate Middle 1000	
SMR244132	Guide Curve Complete	
SMR244133	Guide Curve Complete	
SCV807104	Inner Deck Profile Bot.Bend SWU30-K	SWU
SCV894009	Inner Deck.-Bend Top Right SDS-30-U	SDS
SFV394583	Inner Decking	
SMV244111	Inner Decking (Order In Meters)	
SMV405408	Inner Decking Bend Bottom 35°	
SMV405251	Inner Decking Bottom Curve 30°	
SMV405254	Inner Decking Top Curve 30°	
SVV265535	Inner Face Plate	9700
SVV265536	Inner Face Plate	9700
SWV770096	Lower Glass Panel	

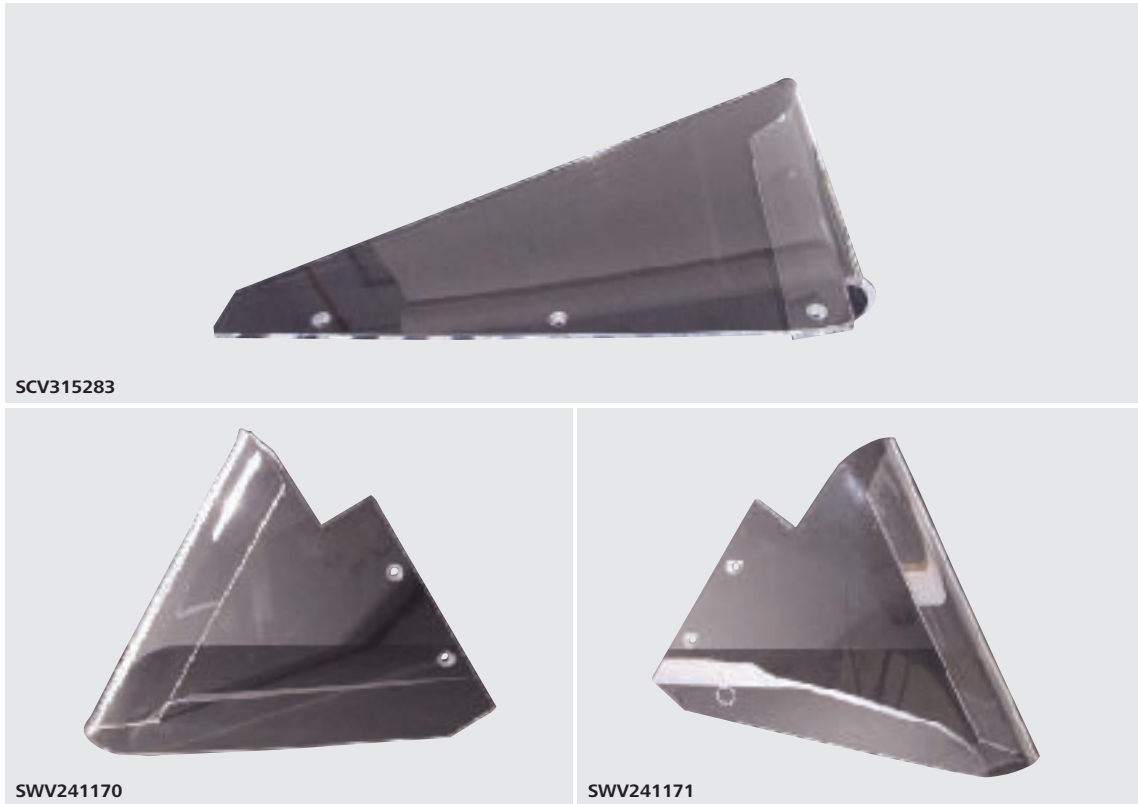
7

# Covers, Decking, Trim, Plates, Panels, etc.



Part Number	Description	Schindler Model
SWV770114	Mounting Plate	
SWV770905	Newel Base Skirt Lower & Upper	
SMV313311	Newel End Support	
SMV405663	Outer Decking (Order In Meters)	
SMV405301	Outer Decking Bend Bottom 30°	
SMV405300	Outer Decking Bend Bottom 35°	
SMV405304	Outer Decking Bend Top 30°	
SMV313248	Outer Decking Bottom Curve 30°	
SVV265539	Outer Front Plate	9700
SVV265540	Outer Front Plate	9700
SMR405495	Plate, Escalator	
SEL467434	Relieving Curve Profile 3000mm	
SML244308	Skirt Panel Bend	
SML244309	Skirt Panel Bend	
SCV315282	Soffit Guard Ceiling Deflector Instal. 30° Right	SDS, SDU, SWE
SCV315277	Soffit Guard Ceiling Deflector Left Hand	SDS, SDU
SCV315276	Soffit Guard Ceiling Deflector Right Hand	SDS, SDU

# Covers, Decking, Trim, Plates, Panels, etc.



Part Number	Description	Schindler Model
SCV315283	Soffit Guard Ceiling Deflector - Instal. 30° Left	SDS, SDU, SWE
SCV436268	Soffit Guard Wedging Guard - Crossed, 30° Right	SDS, SDU
SCV436267	Soffit Guard Wedging Guard- Crossed, 30° Left	SDS, SDU
SWV241170	Soffit Guard Wedging Guard, 30° Left	SDS, SDU
SWV241171	Soffit Guard Wedging Guard, 30° Right	SDS, SDU
SMH405631	Support Plate Complete	
SMH405632	Support Plate Complete	
SMD244408	Cover Complete	9500
SMD244409	Cover Complete	9500
SMD244538	Cover Complete	9500
SMD244539	Cover Complete	9500
SMD244152	Rubber Section	9500
SMD244301	Rubber Strips	9500
SMD244604	Set Screw	9500
SMD244240	Adjusting Screw	9500