

Typical configurations are shown in bold, or select options

1 Oval Profile:
Vertical 1.9" x 1.0" (48.26 x 25.4mm)  Only in Stainless Brushed (#4) AHO190VS

Oval Profile:
Horizontal 1.9" x 1.0" (48.26 x 25.4mm)  Only in Stainless Brushed (#4) AHO190VS

2 Vertical Profile Spacer:
Barrel 1.25" (31.75mm) Dia. BL-O
Soft Square 1.25" (31.75mm) SQ-O

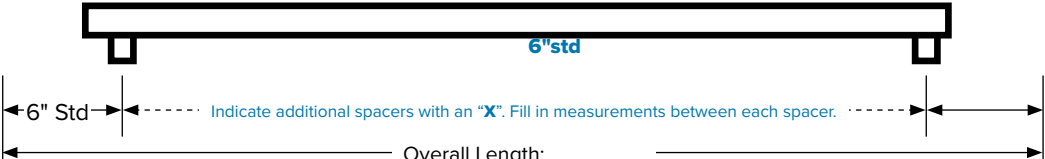
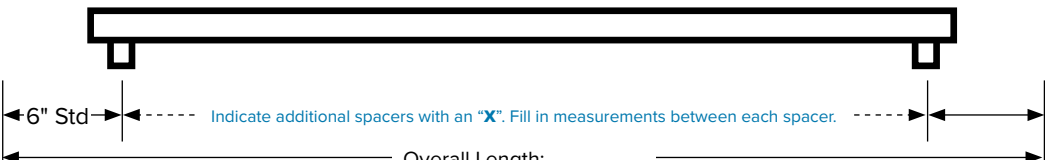
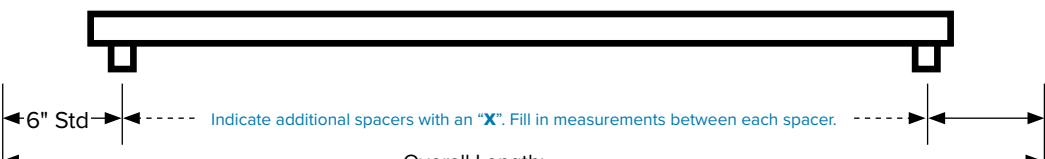
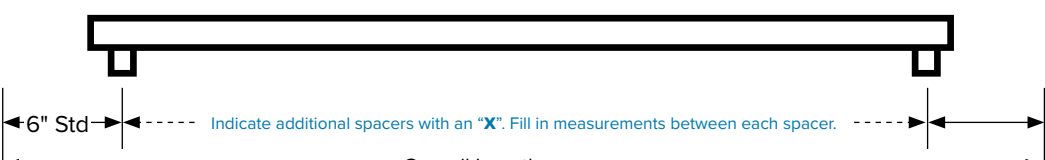
Horizontal Profile Spacer:
 Supplied only with:
Saddle Mount 1.25" (31.75mm) SM-O

3 Spacer Installation:
In-Cab (removable) IR
 Exterior Mounting IX
 Note: Not all options may be available; please check our website or call for details

Optional CerinoX Coating:
 CerinoX is a ceramic coating over Stainless brushed.

Onyx Black (gloss)	CX1
StormTrooper White (gloss)	CX2
Burnt Bronze (matte)	CX3
Charcoal Bronze (matte)	CX4
Bondi Golden (matte)	CX5

4 Select Rail Ends and Specify Measurements:

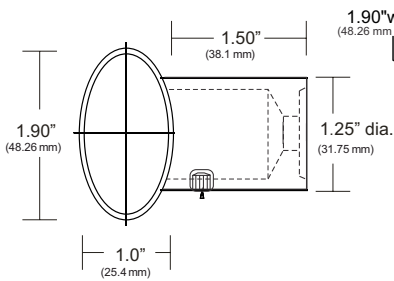
	Imperial	Metric
Qty: ST Straight BR Bent		Straight ST Bent BR
Qty: ST Straight BR Bent		Straight ST Bent BR
Qty: ST Straight BR Bent		Straight ST Bent BR
Qty: ST Straight BR Bent		Straight ST Bent BR

5 Additional Notes/Details/Specifications:

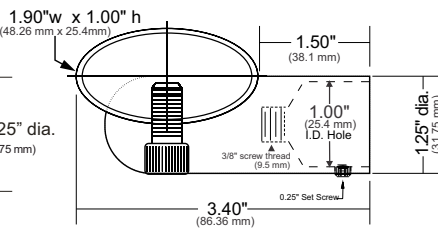
QUOTE FOR:		SHIP TO:	SUBMIT FORM:
Company: _____	Address: _____		
Contact: _____	City: _____		OR
PO #: _____	Country: _____ Zip/Postal Code: _____		
Job Name: _____	Tel: _____ Fax: _____		
E-Mail: _____	Freight: Add Shipping On Account # _____		To clear form, go to menu > File > Revert

OVAL HANDRAIL ENGINEERING DATA (AHO190VS-AHO190HS SERIES)

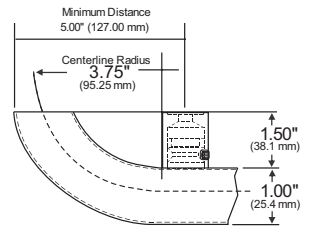
Vertical Profile #AHO190VS



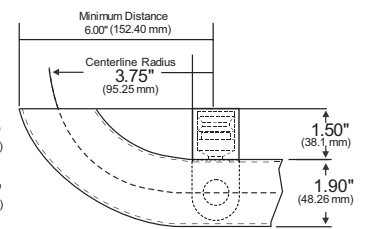
Horizontal Profile #AHO190HS



Vertical Profile Bend #AHOBEV

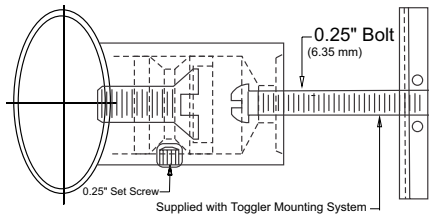


Horizontal Profile Bend #AHOBEH

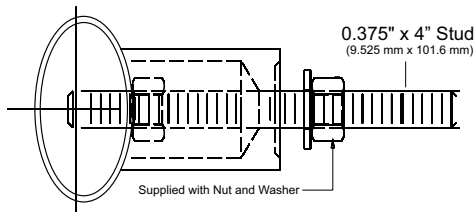


VERTICAL PROFILE INSTALLATION SPACER

In Cab (removable) Mounting Spacer



Exterior Cab Mounting Spacer



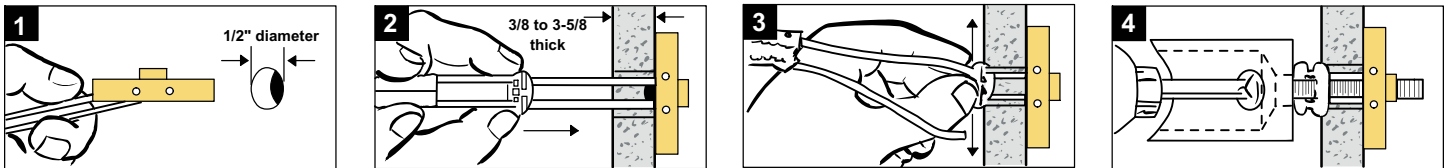
PULL-OUT VALUES for 1/4"- 20 BOLT

265 lbs (120 kg) ultimate tensile load in 1/2" drywall
 306 lbs (162 kg) ultimate tensile load in 5/8" drywall
 925 lbs (420 kg) ultimate tensile load in concrete block
 1,283 lbs (583 kg) ultimate tensile load in steel plate

PULL-OUT VALUES for 3/8" STUD

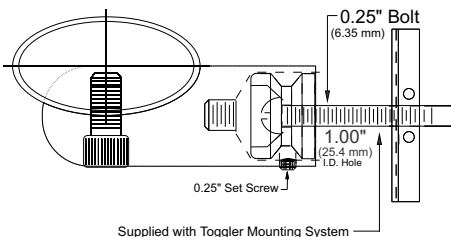
Handrail Thread-lock fastener engineered test data
 Pull-out values for removal of threaded fasteners from
 Lustre Products' handrails = 1509 lbs
 Tests by independent test laboratory show ultimate load. Industry safety standards
 recommend 1/4 of the values for actual applications. Age and conditions of sub-
 strate will cause load values to vary.

Vertical Profile Mounting Instructions

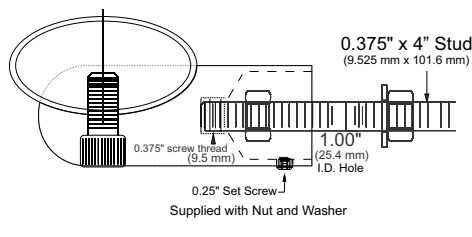


HORIZONTAL PROFILE INSTALLATION SPACER

In Cab (removable) Mounting Spacer



Exterior Cab Mounting Spacer



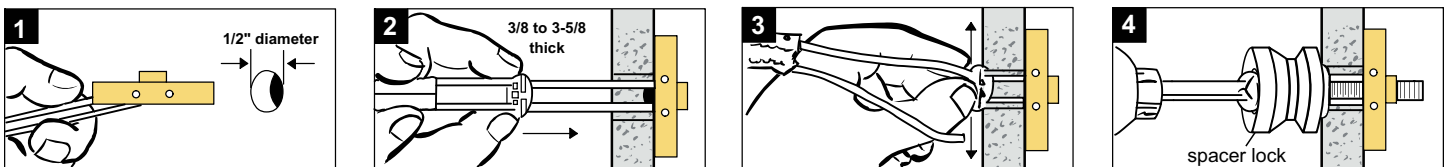
PULL-OUT VALUES for 1/4"- 20 BOLT

265 lbs (120 kg) ultimate tensile load in 1/2" drywall
 306 lbs (162 kg) ultimate tensile load in 5/8" drywall
 925 lbs (420 kg) ultimate tensile load in concrete block
 1,283 lbs (583 kg) ultimate tensile load in steel plate

PULL-OUT VALUES for 3/8" STUD

Handrail Thread-lock fastener engineered test data
 Pull-out values for removal of threaded fasteners from
 Lustre Products' handrails = 1509 lbs
 Tests by independent test laboratory show ultimate load. Industry safety standards
 recommend 1/4 of the values for actual applications. Age and conditions of sub-
 strate will cause load values to vary.

Horizontal Profile Mounting Instructions



HANDRAIL WEIGHT

ACTUAL WEIGHTS = Handrail physical weight calculations = 1.1 lbs per lineal foot (0.50 kg / 30.48 cm)

Spacer assembly = 0.4 lbs (0.18 kg) per spacer

SHIPPING WEIGHTS = Average assembled & packaged shipping weight = 2.1 lbs per lineal foot of handrail (0.95 kg / 30.48 cm)

CARE & MAINTENANCE

To clean and maintain these handrails: gently clean only with a soft cloth, dampened with non abrasive soap and water. Maintain stainless steel using Scotch-Brite pads, Brasso, Miracle Shine, or other commercial metal polish. Brass and bronze sheet metal finishes have a baked clear coat and are non-refinishable. THE FINISH IS NOT WARRANTIED. It will degrade with normal use and typical wear and tear.